



Leading Manufacturer, Exporter & Supplier of
Forged Flange and Fittings

An
ISO 9001:2015
Certified Co.





CERTIFICATE

Certificate No. : 171010707541

This is to Certify that the
Quality Management System Of

PRESTIGE FORGE

30-Samrat Industrial Area, Gokuldharm Main Road,
Nr. Aambedkar Chowk, Rajkot-360004, Gujarat, India.

has been independently assessed and is compliant
with the requirements of

ISO 9001:2015

For the following activities

**MANUFACTURER AND SUPPLY OF FLANGES, PIPE FITTINGS
AND METAL COMPONENTS FOR AUTOMOTIVE APPLICATIONS**

01 October, 2014 Original Registered

07 July, 2017 Latest Issued

06 July, 2020 Valid Until

July, 2018 1st Surveillance Audit

July, 2019 2nd Surveillance Audit

A handwritten signature in black ink, appearing to read 'J. S. ...'.

DIRECTOR
TQV Certification Services Private Limited.



The Certificate of Registration remains the property of
TQV Certification Services Private Limited

and shall be returned immediately upon request. for more information

(For current validity of the certificate, visit our website : www.tqvcertification.com)

This registration is subject to the company maintaining its system to the required standard, Which will be Monitored by TQV.



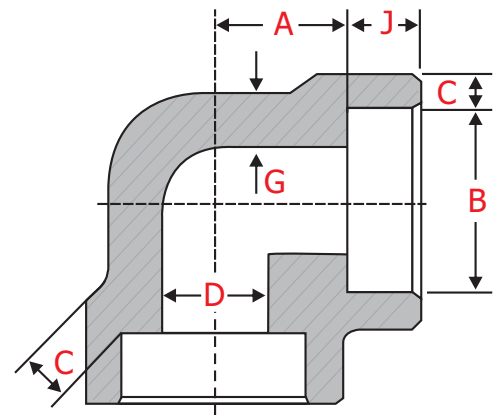
Leading Manufacturer, Exporter & Supplier of **Forged Flange and Fittings**

Dimensions Socket Weld Elbows ASME B16.11 Class 3000

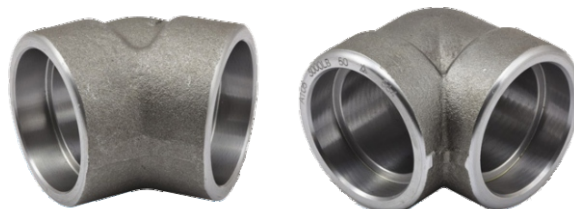
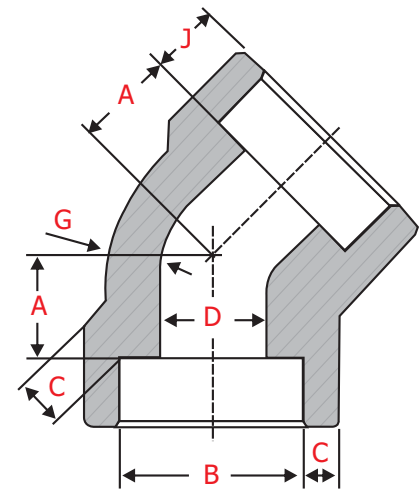
NPS 1/2 to 4 - 90°/45°

NPS	Socket Bore	Depth Socket	Bore Dia	Socket WT	Body WT	Center to Bottom of Socket	
	B	J	D	C	G	90°	45°
1/2	21.95	10	16.6	4.65	3.75	15.5	11.5
	21.70		15	4.10			
3/4	27.30	13	21.7	4.90	3.90	19.5	12.5
	27.05		20.2	4.25			
1	34.05	13	27.4	5.70	4.55	22	14
	33.80		25.9	5.00			
1 1/4	42.80	13	35.8	6.05	4.85	27	17
	42.55		34.3	5.30			
1 1/2	48.90	13	41.7	6.35	5.10	32	21
	48.65		40.1	5.55			
2	61.35	16	53.5	6.95	5.55	38	25
	61.10		51.7	6.05			
2 1/2	74.20	16	64.2	8.75	7.00	41.5	29
	73.80		61.2	7.65			
3	90.15	16	79.5	9.50	7.60	57.5	31.5
	89.80		46.4	8.30			
4	115.80	19	103.8	10.70	8.55	66.5	41.5
	115.45		100.7	9.35			

SW Elbow 90°



SW Elbow 45°





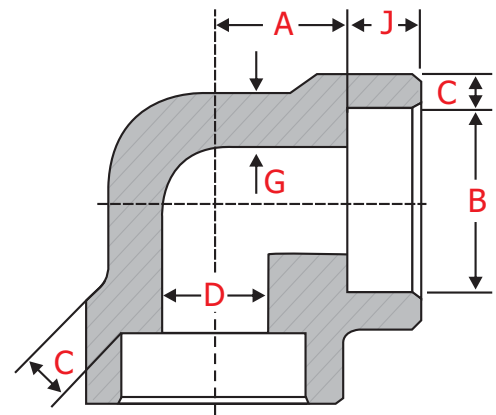
Leading Manufacturer, Exporter & Supplier of **Forged Flange and Fittings**

Dimensions Socket Weld Elbows ASME B16.11 Class 6000

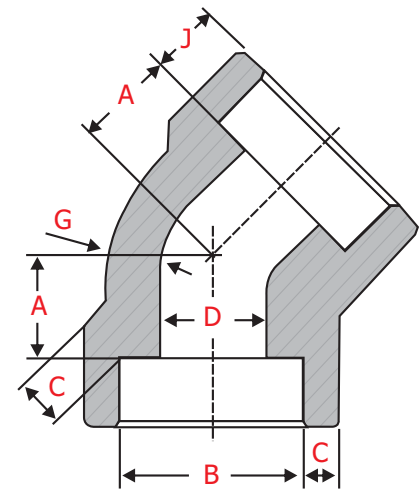
NPS 1/2 to 2 - 90°/45°

NPS	Socket Bore	Depth Socket	Bore Dia	Socket WT	Body WT	Center to Bottom of Socket A	
	B	J	D	C	G	90°	45°
1/2	21.95 21.70	10	12.5 11	5.95 5.20	4.80	19.5	12.5
3/4	27.30 27.05	13	16.3 14.8	6.95 6.05	5.55	22.5	14.5
1	34.05 33.80	13	21.5 19.9	7.90 6.95	6.35	27	17
1 1/4	42.80 42.55	13	30.2 28.7	7.90 6.95	6.35	32	21
1 1/2	48.90 48.65	13	34.7 33.2	8.90 7.80	7.15	38	25
2	61.35 61.10	16	43.6 42.1	10.90 9.50	8.75	41	29

SW Elbow 90°



SW Elbow 45°



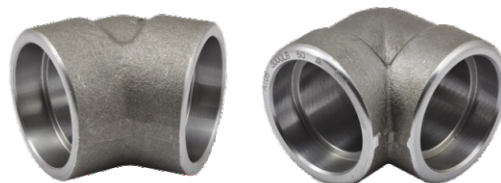
General notes:

- Dimensions are in millimeters unless otherwise indicated.
- Socket Bore (B) - Maximum and minimum dimensions.
- Bore Diameter (D) - Maximum and minimum dimensions.
- Socket wall thickness - (C) - Average of Socket wall thickness.
- Dimensional tolerances center to bottom of socket - (A)

NPS 1/2 and NPS 3/4 = +/- 1.5 mm

NPS 1 to NPS 2 = +/- 2 mm

NPS 2 1/2 to NPS 4 = +/- 2.5 mm



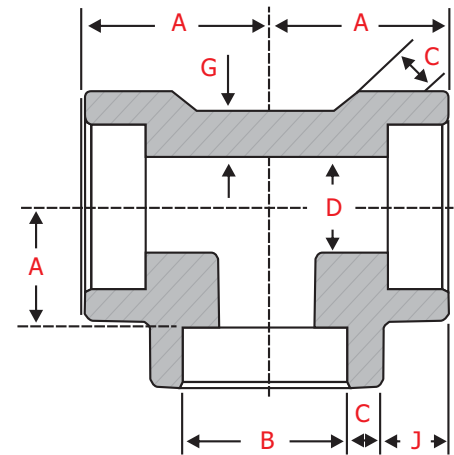


Dimensions SW Tees & Crosses ASME B16.11 Class 3000

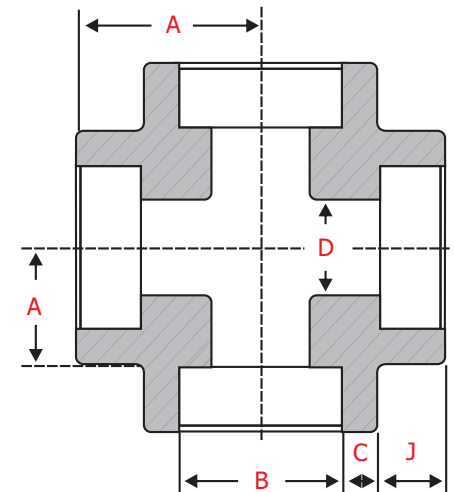
NPS 1/2 to 4 - 90°/45°

NPS	Socket Bore	Depth Socket	Bore dia	Socket WT	Body WT	Center to Bottom of Socket
	B	J	D	C	G	A
1/2	21.95 21.70	10	16.6 15	4.65 4.10	3.75	15.5
3/4	27.30 27.05	13	21.7 20.2	4.90 4.25	3.90	19.5
1	34.05 33.80	13	27.4 25.9	5.70 5.00	4.55	22
1¼	42.80 42.55	13	35.8 34.3	6.05 5.30	4.85	27
1½	48.90 48.65	13	41.7 40.1	6.35 5.55	5.10	32
2	61.35 61.10	16	53.5 51.7	6.95 6.05	5.55	38
2½	74.20 73.80	16	64.2 61.2	8.75 7.65	7.00	41.5
3	90.15 89.80	16	79.5 46.4	9.50 8.30	7.60	57.5
4	115.80 115.45	19	103.8 100.7	10.70 9.35	8.55	66.5

Socket weld Tee



Socket Weld Cross





Dimensions SW Tees & Crosses ASME B16.11 Class 6000

NPS 1/2 to 2 - 90°/45°

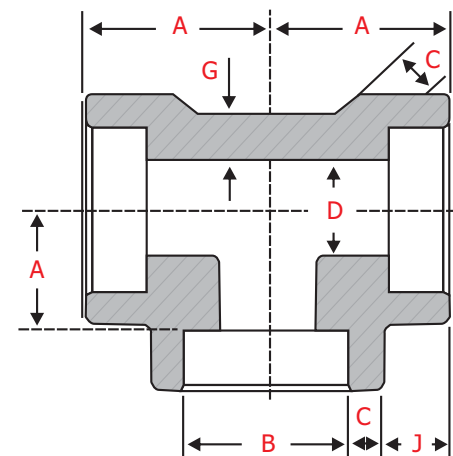
NPS	Socket Bore	Depth Socket	Bore dia	Socket WT	Body WT	Center to Bottom of Socket
	B	J	D	C	G	A
1/2	21.95 21.70	10	12.5 11	5.95 5.20	4.80	19.5
3/4	27.30 27.05	13	16.3 14.8	6.95 6.05	5.55	22.5
1	34.05 33.80	13	21.5 19.9	7.90 6.95	6.35	27
1 1/4	42.80 42.55	13	30.2 28.7	7.90 6.95	6.35	32
1 1/2	48.90 48.65	13	34.7 33.2	8.90 7.80	7.15	38
2	61.35 61.10	16	43.6 42.1	10.90 9.50	8.75	41

General notes:

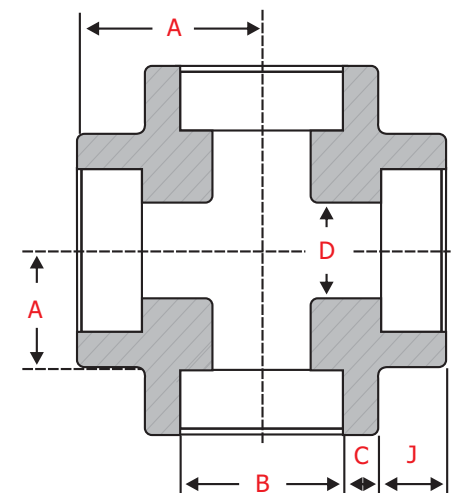
- Dimensions are in millimeters unless otherwise indicated.
- Socket Bore (**B**) - Maximum and minimum dimensions.
- Bore Diameter (**D**) - Maximum and minimum dimensions.
- Socket wall thickness - (**C**) - Average of Socket wall thickness.
- Dimensional tolerances center to bottom of socket - (**A**)
NPS 1/2 and NPS 3/4 = +/- 1.5 mm
NPS 1 to NPS 2 = +/- 2 mm
NPS 2 1/2 to NPS 4 = +/- 2.5 mm



Socket weld Tee



Socket Weld Cross



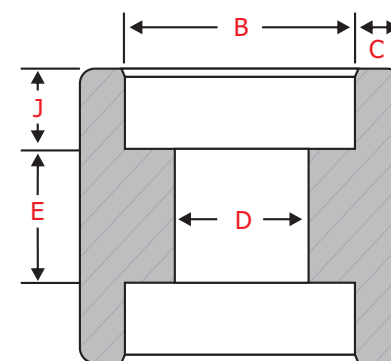


Dimensions Socket Weld Couplings ASME B16.11 Class 3000

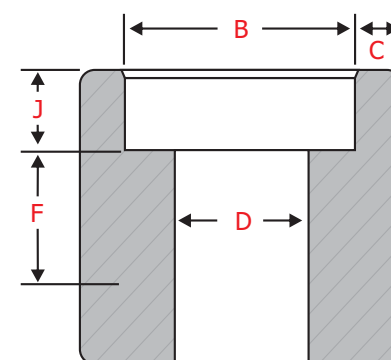
NPS 1/2 to 4

NPS	Socket Bore	Depth Socket	Bore diameter	Socket wall THK	Laying lengths	
	B	J	D	C	Coupling E	Half coupling F
1/2	21.95	10	16.6	4.65	9.5	22.5
	21.70		15	4.10		
3/4	27.30	13	21.7	4.90	9.5	23.5
	27.05		20.2	4.25		
1	34.05	13	27.4	5.70	13	29
	33.80		25.9	5.00		
1 1/4	42.80	13	35.8	6.05	13	30
	42.55		34.3	5.30		
1 1/2	48.90	13	41.7	6.35	13	32
	48.65		40.1	5.55		
2	61.35	16	53.5	6.95	19	41
	61.10		51.7	6.05		
2 1/2	74.20	16	64.2	8.75	19	42.5
	73.80		61.2	7.65		
3	90.15	16	79.5	9.50	19	44.5
	89.80		46.4	8.30		
4	115.80	19	103.8	10.70	19	47.5
	115.45		100.7	9.35		

SW Coupling



SW Half Coupling



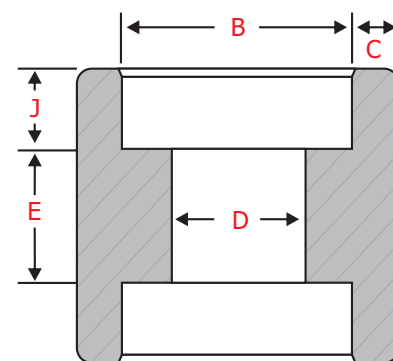


Dimensions Socket Weld Couplings ASME B16.11 Class 6000

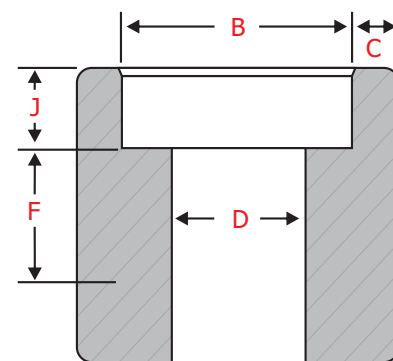
NPS 1/2 to 2

NPS	Socket Bore	Depth Socket	Bore diameter	Socket wall THK	Laying lengths	
	B	J	D	C	Coupling E	Half coupling F
1/2	21.95	10	12.5	5.95	9.5	22.5
	21.70		11	5.20		
3/4	27.30	13	16.3	6.95	9.5	23.5
	27.05		14.8	6.05		
1	34.05	13	21.5	7.90	13	29
	33.80		19.9	6.95		
1 1/4	42.80	13	30.2	7.90	13	30
	42.55		28.7	6.95		
1 1/2	48.90	13	34.7	8.90	13	32
	48.65		33.2	7.80		
2	61.35	16	43.6	10.90	19	41
	61.10		42.1	9.50		

SW Coupling



SW Half Coupling



General notes:

- Dimensions are in millimeters unless otherwise indicated.
- Socket Bore (**B**) - Maximum and Minimum dimensions.
- Bore Diameter (**D**) - Maximum and Minimum dimensions.
- Socket wall thickness - (**C**) - Average of Socket wall thickness.
- Dimensional tolerances laying lengths - (**E & F**)
 NPS 1/2 and NPS 3/4 = +/- 1.5 mm
 NPS 1 to NPS 2 = +/- 2 mm
 NPS 2 1/2 to NPS 4 = +/- 2.5 mm



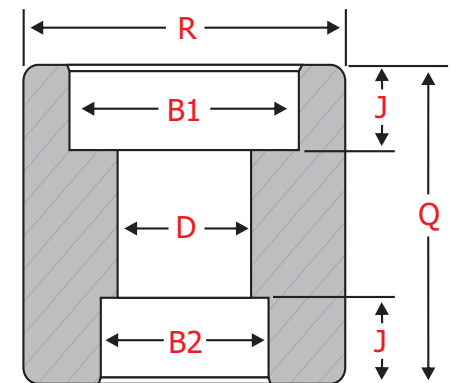


Dimensions SW Reducing Couplings ASME B16.11 Class 3000

NPS 1/2 to 2

NPS			Socket Bore		Depth Socket J	Bore dia		Length Coupling	Diameter Coupling	
			B1	B2	B1	B2	D	Q	R	
3/4	x	1/2	27.30	21.95	13	10	16.6	35	36	
			27.05	21.70						
1	x	3/4	34.05	27.30	13	13	21.7	38.1	45.2	
			33.80	27.05						
1	x	1/2	34.05	21.95	13	10	16.6	38.1	45.2	
			33.80	21.70						
1 1/4	x	1	42.80	34.05	13	13	27.4	38.1	55.1	
			42.55	33.80						
1 1/2	x	1	48.90	34.05	13	13	27.4	38.1	60	
			48.65	33.80						
1 1/2	x	3/4	48.90	27.30	13	13	21.7	38.1	60	
			48.65	27.05						
1 1/2	x	1/2	48.90	21.95	13	10	16.6	38.1	60	
			48.65	21.70						
2	x	1 1/2	61.35	48.90	16	13	41.7	51.3	74.9	
			61.10	48.65						
2	x	1	74.20	34.05	16	13	27.4	51.3	74.9	
			73.80	33.80						

SW Reducing Coupling



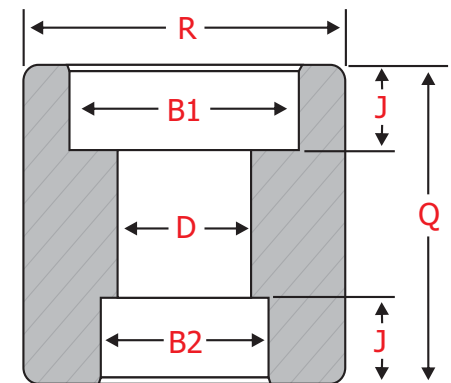


Dimensions SW Reducing Couplings ASME B16.11 Class 6000

NPS 1/2 to 2

NPS			Socket Bore		Depth Socket J		Bore dia		Length Coupling		Diameter Coupling		
			B1	B2	B1	B2	D	Q	R				
3/4	x	1/2	27.30	21.95	13	10	12.5	35	40.1	11	Q	R	
			27.05	21.70			11						
1	x	3/4	34.05	27.30	13	13	16.3	38.1	50	14.8	Q	R	
			33.80	27.05			14.8						
1	x	1/2	34.05	21.95	13	10	12.5	38.1	50	11	Q	R	
			33.80	21.70			11						
1 1/4	x	1	42.80	34.05	13	13	21.5	38.1	57.9	19.9	Q	R	
			42.55	33.80			19.9						
1 1/2	x	1	48.90	34.05	13	13	21.5	38.1	65	19.9	Q	R	
			48.65	33.80			19.9						
1 1/2	x	3/4	48.90	27.30	13	13	16.3	38.1	65	14.8	Q	R	
			48.65	27.05			14.8						
1 1/2	x	1/2	48.90	21.95	13	10	12.5	38.1	65	11	Q	R	
			48.65	21.70			11						
2	x	1 1/2	61.35	48.90	16	13	34.7	51.3	82	33.2	Q	R	
			61.10	48.65			33.2						
2	x	1	74.20	34.05	16	13	21.5	51.3	82	19.9	Q	R	
			73.80	33.80			19.9						

SW Reducing Coupling



General notes:

Dimensions are in millimeters unless otherwise indicated.

- Socket Bore (**B1** / **B2**) - Maximum and Minimum dimensions.
- Bore Diameter (**D**) - Maximum and Minimum dimensions.



Dimensions Socket Weld Caps ASME B16.11

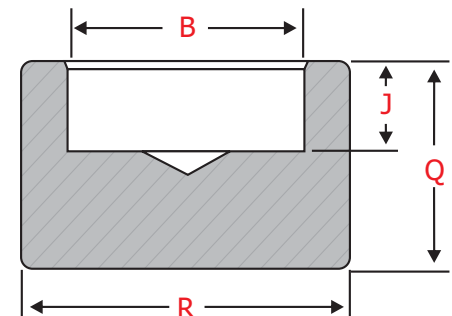
NPS 1/2 to 4

Class 3000

NPS	Socket Bore	Depth Socket	Length Cap	Diameter Cap
	B	J	Q	R
1/2	21.95	10	19	32
	21.70			
3/4	27.30	13	23	38
	27.05			
1	34.05	13	26	45
	33.80			
1 1/4	42.80	13	28	55
	42.55			
1 1/2	48.90	13	30	65
	48.65			
2	61.35	16	36	75
	61.10			
2 1/2	74.20	16	38	92
	73.80			
3	90.15	16	42	110
	89.80			
4	115.80	19	48	140
	115.45			

Class 6000

NPS	Socket Bore	Depth Socket	Length Cap	Diameter Cap
	B	J	Q	R
1/2	21.95	10	22	34
	21.70			
3/4	27.30	13	26	41
	27.05			
1	34.05	13	28	50
	33.80			
1 1/4	42.80	13	30	58
	42.55			
1 1/2	48.90	13	32	66.5
	48.65			
2	61.35	16	38	85
	61.10			



General notes:

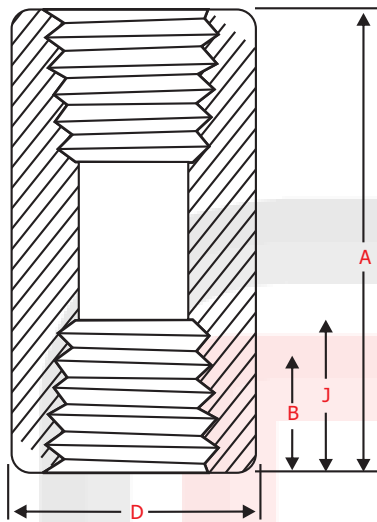
- Dimensions are in millimeters unless otherwise indicated.
- Socket Bore (**B**) - Maximum and Minimum dimensions.



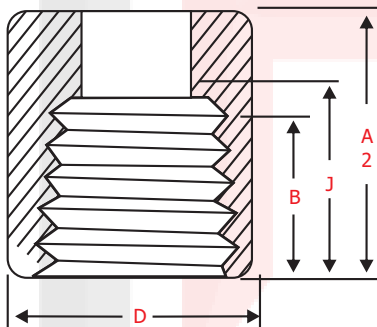
Dimensions Threaded Full / Half Couplings ASME B16.11 Class 3000

NPS 1/2 to 4

Threaded Full - Coupling



Threaded Half-Coupling



NPS	End to End	Outside Diameter	Minimum Length of Thread	
	A	D	B	J
1/2	48	28	10.9	13.6
3/4	51	35	12.7	13.9
1	60	44	14.7	17.3
1¼	67	57	17	18
1½	79	64	17.8	18.4
2	86	76	19	19.2
2½	92	92	23.6	28.9
3	108	108	25.9	30.5
4	121	140	27.7	33

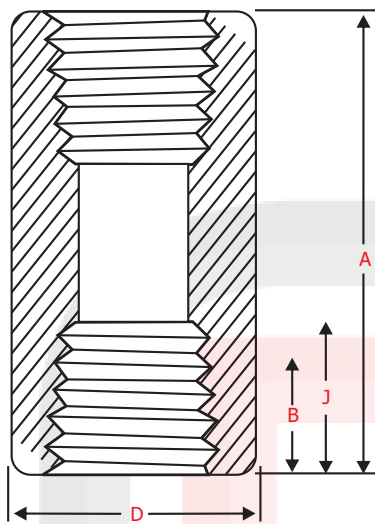




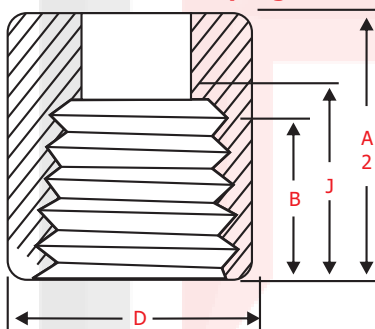
Dimensions Threaded Full / Half Couplings ASME B16.11 Class 6000

NPS 1/2 to 4

Threaded Full - Coupling



Threaded Half-Coupling



NPS	End to End	Outside Diameter	Minimum Length of Thread	
	A	D	B	J
1/2	48	38	10.9	13.6
3/4	51	44	12.7	13.9
1	60	57	14.7	17.3
1¼	67	64	17	18
1½	79	76	17.8	18.4
2	86	92	19	19.2
2½	92	108	23.6	28.9
3	108	127	25.9	30.5
4	121	159	27.7	33

General notes:

- Dimensions are in millimeters unless otherwise indicated.
- Dimension (B) is minimum length of perfect thread.
The length of useful thread (B plus threads with fully formed roots and flat crests) shall not be less than J.

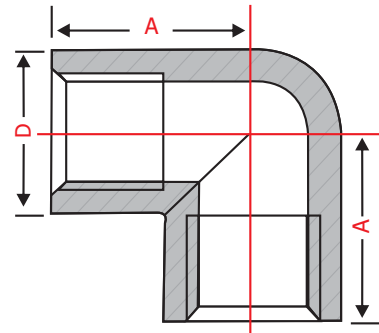




Dimensions Threaded Elbows Equal ASME B16.11 Class 1000

NPS 1/8" to 3" - (90° Female, Equal)

NPS	DN	A (min.)	D
1/8"	6	16	21.50
1/4"	8	22	21.50
3/8"	10	24	25.50
1/2"	15	32	30
3/4"	20	35	36.75
1"	25	43	42.50
1 1/4"	32	51	52
1 1/2"	40	52	59
2"	50	64	75
2 1/2"	65	76	91
3"	80	89	104

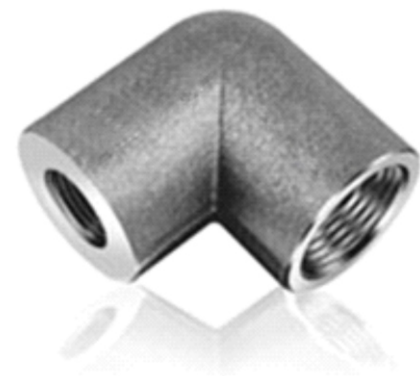
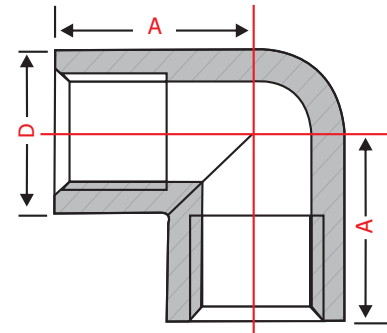




Dimensions Threaded Elbows Unequal ASME B16.11 Class 1000

NPS 1/8" to 3" - (90° Female, Reducing)

NPS (1X2)	DN (1 x 2)	A (min.)	B (min.)	D
1/4" X 1/8"	8 x 6	21	22	21.50
3/8" X 1/4"	10 x 8	22	24	21.50
1/2" X 3/8"	15 x 10	27	32	30.00
3/4" X 1/2"	20 x 15	32	35	36.75
1" X 1/2"	25 x 15	35	43	42.50
1" X 3/4"	25 x 20	38	43	42.50
1 1/4" X 1"	32 x 25	44	51	52.00
1 1/2" X 1 1/4"	40 x 32	48	52	59.00
2" X 1 1/2"	50 x 40	56	64	75.00
2 1/2" X 1 1/2"	65 x 40	60	76	91.00
2 1/2" X 2"	65 x 50	67	76	91.00
3" X 2"	80 x 50	73	89	104.00

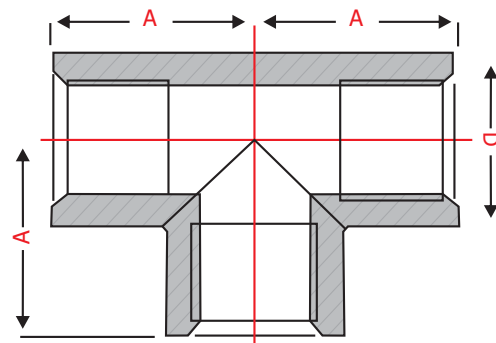




Dimensions Threaded Tee Equal ASME B16.11 Class 1000

NPS 1/8" to 3" (90° Female, Equal)

NPS	DN	A (min.)	D
1/8"	6	16	21.50
1/4"	8	22	21.50
3/8"	10	24	25.50
1/2"	15	32	30.00
3/4"	20	35	36.75
1"	25	43	42.50
1 1/4"	32	51	52.00
1 1/2"	40	52	59.00
2"	50	64	75.00
2 1/2"	65	76	91.00
3"	80	89	104.00

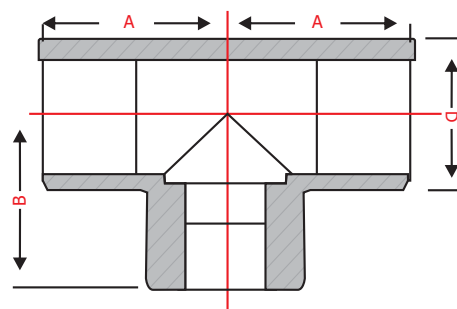




Dimensions Threaded Tee Unequal ASME B16.11 Class 1000

NPS 1/8" to 3" (90° Female, Reducing)

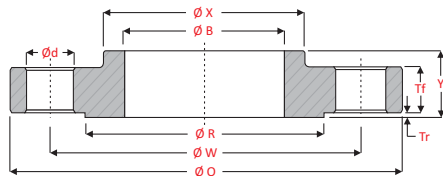
NPS (1X2)	DN (1 x 2)	A (min.)	B (min.)	D
1/4" X 1/8"	8 x 6	21	22	21.50
3/8" X 1/4"	10 x 8	22	24	21.50
1/2" X 3/8"	15 x 10	27	32	30.00
3/4" X 1/2"	20 x 15	32	35	36.75
1" X 1/2"	25 x 15	35	43	42.50
1" X 3/4"	25 x 20	38	43	42.50
1 1/4" X 1"	32 x 25	44	51	52.00
1 1/2" X 1 1/4"	40 x 32	48	52	59.00
2" X 1 1/2"	50 x 40	56	64	75.00
2 1/2" X 1 1/2"	65 x 40	60	76	91.00
2 1/2" X 2"	65 x 50	67	76	91.00
3" X 2"	80 x 50	73	89	104.00



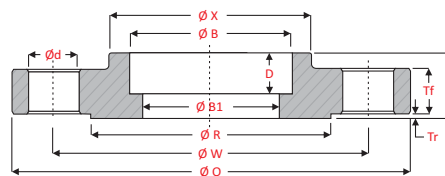


Leading Manufacturer, Exporter & Supplier of **Forged Flange and Fittings**

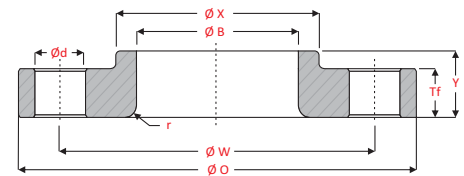
ASME B 16.5 - 2009



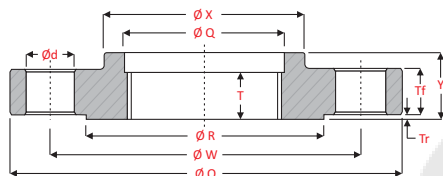
SLIP ON FLANGE



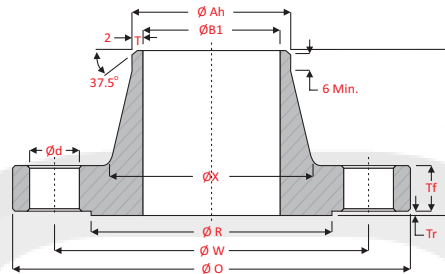
SOCKET WELD FLANGE



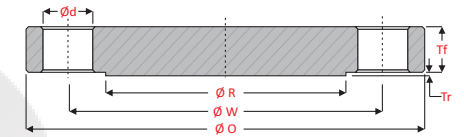
LAP JOINT FLANGE



THREADED FLANGE



WELDNECK FLANGE



BLIND FLANGE

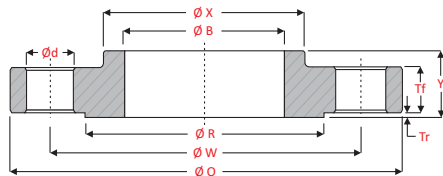
ASME B 16.5 - 2009 - Class 150 Flanges

Nominal Pipe Size	Flange Diameter	Flange Thickness		Hub Dia		Bore			Length Through Hub			Radius - LJ	Thread Length THRD	Counter Bore THRD	Depth of Socket SW	Raised Face		Drilling			
		SO, SW, WN, BL, THRD	LJ	SO, SW, LJ, WN, THRD	Bewel end Dia-WN	SO	LJ	WN LJ	SO, SW, THRD	LJ	WN					Dia	Thickness	PCD	Hole Dia	No. of Hole	
NPS	O	Tf	Tf	X	Ah	B	B	B1	Y	Y	Y	r	T	Q	D	R	Tr	W	d	n	
1/2"	15	90	9.6	11.2	30	21.3	22.2	22.9	15.8	16	16	48	3	16	---	10	34.9	2	60.3	15.9	4
3/4"	20	100	11.2	12.7	38	26.7	27.7	28.2	20.9	16	16	53	3	16	---	11	42.9	2	69.9	15.9	4
1"	25	110	12.7	14.3	49	33.4	34.5	34.9	26.6	18	17	56	3	18	---	13	50.8	2	79.4	15.9	4
1 1/4"	30	115	14.3	15.9	59	42.2	43.2	43.7	35.1	21	21	58	5	21	---	14	63.5	2	88.9	15.9	4
1 1/2"	40	125	15.9	17.5	65	48.3	49.5	50	40.9	23	22	62	6	23	---	16	73	2	98.4	15.9	4
2"	50	150	17.5	19.1	78	60.3	61.9	62.5	52.5	26	25	64	8	26	---	17	92.1	2	120.7	19	4
2 1/2"	60	180	20.7	22.3	90	73	74.6	75.4	62.7	29	29	70	8	29	---	19	104.8	2	139.7	19	4
3"	80	190	22.3	23.9	108	88.9	90.7	91.4	77.9	31	30	70	10	31	---	21	127	2	152.4	19	4
3 1/2"	90	215	22.3	23.9	122	101.6	103.4	104.1	90.1	32	32	72	10	32	---	22	139.7	2	177.8	19	8
4"	100	230	22.3	23.9	135	114.3	116.1	116.8	102.3	34	33	77	11	34	---	24	157.2	2	190.5	19	8
5"	125	255	22.3	23.9	164	141.3	143.8	144.4	128.2	37	36	89	11	37	---	24	185.7	2	215.9	22.2	8
6"	150	280	23.9	25.4	192	168.3	170.7	171.4	154.1	40	40	89	13	40	---	27	215.9	2	241.3	22.2	8
8"	200	345	27	28.6	246	219.1	221.5	222.2	202.7	45	44	102	13	45	---	32	269.9	2	298.5	22.2	8
10"	250	405	28.6	30.2	305	273	276.2	277.4	254.6	50	49	102	13	50	---	33	323.8	2	362	25.4	12
12"	300	485	30.2	31.8	365	323.8	327	328.2	304.8	56	56	115	13	56	---	40	381	2	431.8	25.4	12
14"	350	535	33.4	35	400	355.6	359.2	360.2	336.5	58	79	127	13	58	---	41	412.8	2	476.3	28.6	12
16"	400	595	35	36.6	457	406.4	410.5	411.2	387.3	64	87	127	13	64	---	44	469.9	2	539.8	28.6	16
18"	450	635	38.1	39.7	505	457	461.8	462.3	438.1	69	97	140	13	69	---	49	533.4	2	577.9	31.7	16
20"	500	700	41.3	42.9	559	508	513.1	514.4	488.9	73	103	145	13	73	---	54	584.2	2	635	31.7	20
24"	600	815	46.1	47.7	663	610	616	616	590.5	83	111	153	13	83	---	64	692.2	2	749.3	34.9	20

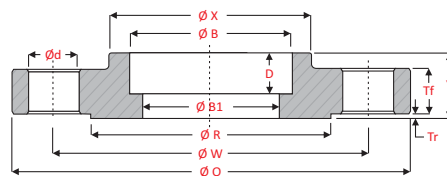


Leading Manufacturer, Exporter & Supplier of **Forged Flange and Fittings**

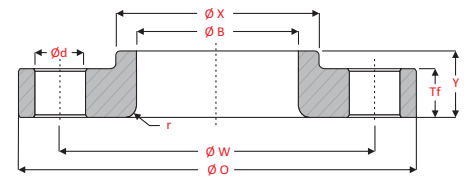
ASME B 16.5 - 2009



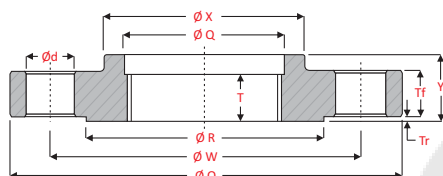
SLIP ON FLANGE



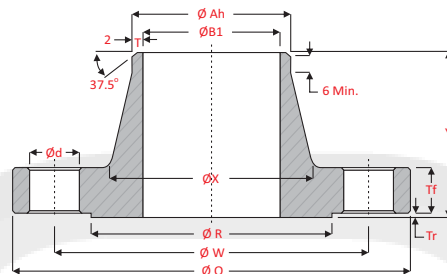
SOCKET WELD FLANGE



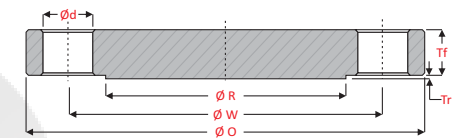
LAP JOINT FLANGE



THREADED FLANGE



WELDNECK FLANGE



BLIND FLANGE

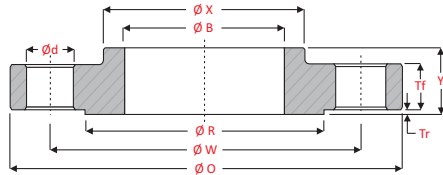
ASME B 16.5 - 2009 - Class 300 Flanges

Nominal Pipe Size	Flange Diameter	Flange Thickness		Hub Dia		Bore			Length Through Hub			Radius - LJ	Thread Length THRD	Counter Bore THRD	Depth of Socket SW	Raised Face		Drilling			
		SO, SW, WN, BL, THRD	LJ	SO, SW, LJ, WN, THRD	Bewel end Dia-WN	SO	LJ	WN LJ	SO, SW, THRD	LJ	WN					Dia	Thickness	PCD	Hole Dia	No. of Hole	
NPS	O	Tf	Tf	X	Ah	B	B	B1	Y	Y	Y	r	T	Q	D	R	Tr	W	d	n	
1/2"	15	95	12.7	14.3	38	21.3	22.2	22.9	15.8	23	22	53	3	16	23.6	10	34.9	2	66.7	15.9	4
3/4"	20	115	14.3	15.9	48	26.7	27.7	28.2	20.9	26	25	58	3	16	29	11	42.9	2	82.6	19	4
1"	25	125	15.9	17.5	54	33.4	34.5	34.9	26.6	27	27	62	3	18	35.8	13	50.8	2	88.9	19	4
1 1/4"	30	135	17.5	19.1	64	42.2	43.2	43.7	35.1	27	27	66	5	21	44.4	14	63.5	2	98.4	19	4
1 1/2"	40	155	19.1	20.7	70	48.3	49.5	50	40.9	31	30	69	6	23	50.3	16	73	2	114.3	22.2	4
2"	50	165	20.7	22.3	84	60.3	61.9	62.5	52.5	34	33	70	8	29	63.5	17	92.1	2	127	19	8
2 1/2"	60	190	23.9	25.4	100	73	74.6	75.4	62.7	39	38	77	8	32	76.2	19	104.8	2	149.2	22.2	8
3"	80	210	27	28.6	117	88.9	90.7	91.4	77.9	43	43	80	10	32	92.2	21	127	2	168.3	22.2	8
3 1/2"	90	230	28.6	30.2	133	101.6	103.4	104.1	90.1	45	44	81	10	37	104.9	22	139.7	2	184.2	22.2	8
4"	100	255	30.2	31.8	146	114.3	116.1	116.8	102.3	48	48	86	11	37	117.6	24	157.2	2	200	22.2	8
5"	125	280	33.4	35	178	141.3	143.8	144.4	128.2	51	51	99	11	43	144.4	24	185.7	2	235	22.2	8
6"	150	320	35	36.6	206	168.3	170.7	171.4	154.1	53	52	99	13	47	171.4	27	215.9	2	269.9	22.2	12
8"	200	380	39.7	41.3	260	219.1	221.5	222.2	202.7	62	62	112	13	51	222.2	32	269.9	2	330.2	25.4	12
10"	250	445	46.1	47.7	321	273	276.2	277.4	254.6	67	95	118	13	56	276.2	33	323.8	2	387.4	28.6	16
12"	300	520	49.3	50.8	375	323.8	327	328.2	304.8	73	102	131	13	61	328.6	40	381	2	450.8	31.7	16
14"	350	585	52.4	54	425	355.6	359.2	360.2	336.5	77	111	143	13	64	360.4	41	412.8	2	514.4	31.7	20
16"	400	650	55.6	57.2	483	406.4	410.5	411.2	387.3	83	121	146	13	69	411.2	44	469.9	2	571.5	34.9	20
18"	450	710	58.8	60.4	533	457	461.8	462.3	438.1	89	130	159	13	70	462	49	533.4	2	628.6	34.9	24
20"	500	775	62	63.5	587	508	513.1	514.4	488.9	96	140	162	13	74	512.8	54	584.2	2	685.8	34.9	24
24"	600	915	68.3	69.9	702	610	616	616	590.5	107	152	169	13	83	614.4	64	692.2	2	812.8	41.3	24

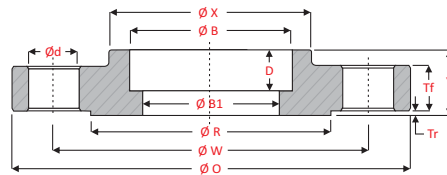


Leading Manufacturer, Exporter & Supplier of **Forged Flange and Fittings**

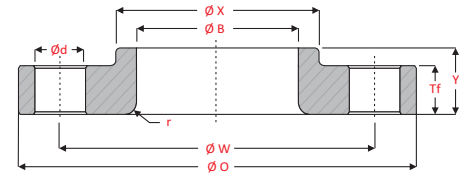
ASME B 16.5 - 2009



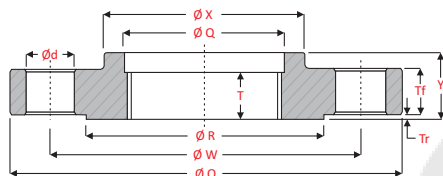
SLIP ON FLANGE



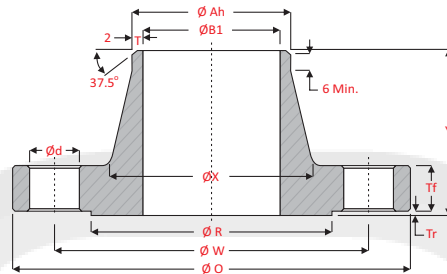
SOCKET WELD FLANGE



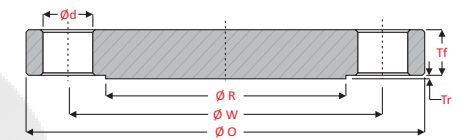
LAP JOINT FLANGE



THREADED FLANGE



WELDNECK FLANGE



BLIND FLANGE

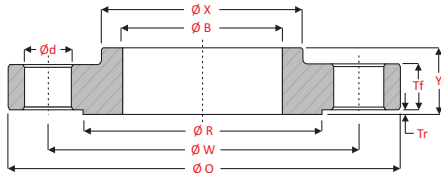
ASME B 16.5 - 2009 - Class 600 Flanges

Nominal Pipe Size	Flange Diameter	Flange Thickness		Hub Dia		Bore			Length Through Hub			Radius - LJ	Thread Length THRD	Counter Bore THRD	Depth of Socket SW	Raised Face		Drilling			
		SO, SW, WN, BL, THRD	LJ	SO, SW, LJ, WN, THRD	Bewel end Dia-WN	SO	LJ	WN LJ	SO, SW, THRD	LJ	WN					Dia	Thickness	PCD	Hole Dia	No. of Hole	
NPS	O	Tf	Tf	X	Ah	B	B	B1	Y	Y	Y	r	T	Q	D	R	Tr	W	d	n	
1/2"	15	95	14.3	14.3	38	21.3	22.2	22.9	15.8	29	22	59	3	16	23.6	10	34.9	7	66.7	15.9	4
3/4"	20	115	15.9	15.9	48	26.7	27.7	28.2	20.9	32	25	64	3	16	29	11	42.9	7	82.6	19	4
1"	25	125	17.5	17.5	54	33.4	34.5	34.9	26.6	34	27	69	3	18	35.8	13	50.8	7	88.9	19	4
1 1/4"	30	135	20.7	20.7	64	42.2	43.2	43.7	35.1	36	29	74	5	21	44.4	14	63.5	7	98.4	19	4
1 1/2"	40	155	22.3	22.3	70	48.3	49.5	50	40.9	39	32	77	6	23	50.6	16	73	7	114.3	22.2	4
2"	50	165	25.4	25.4	84	60.3	61.9	62.5	52.5	44	37	80	8	29	63.5	17	92.1	7	127	19	8
2 1/2"	60	190	28.6	28.6	100	73	74.6	75.4	62.7	48	41	86	8	32	76.2	19	104.8	7	149.2	22.2	8
3"	80	210	31.8	31.8	117	88.9	90.7	91.4	77.9	53	46	90	10	35	92.2	21	127	7	168.3	22.2	8
3 1/2"	90	230	35	35	133	101.6	103.4	104.1	90.1	56	49	93	10	40	104.9	22	139.7	7	184.2	25.4	8
4"	100	275	38.1	38.1	152	114.3	116.1	116.8	102.3	61	54	109	11	42	117.6	24	157.2	7	215.9	25.4	8
5"	125	330	44.5	44.5	189	141.3	143.8	144.4	128.2	67	60	121	11	48	144.4	24	185.7	7	266.7	28.6	8
6"	150	355	47.7	47.7	222	168.3	170.7	171.4	154.1	74	67	124	13	51	171.4	27	215.9	7	292.1	28.6	12
8"	200	420	55.6	55.6	273	219.1	221.5	222.2	202.7	83	76	140	13	58	222.2	32	269.9	7	349.2	31.7	12
10"	250	510	63.5	63.5	343	273	276.2	277.4	254.6	93	111	159	13	66	276.2	33	323.8	7	431.8	34.9	16
12"	300	560	66.7	66.7	400	323.8	327	328.2	304.8	99	117	163	13	70	328.6	40	381	7	489	34.9	20
14"	350	605	69.9	69.9	432	355.6	359.2	360.2	336.5	101	127	172	13	74	360.4	41	412.8	7	527	38.1	20
16"	400	685	76.2	76.2	495	406.4	410.5	411.2	387.3	113	140	185	13	78	411.2	44	469.9	7	603.2	41.3	20
18"	450	745	82.6	82.6	546	457	461.8	462.3	438.1	124	152	191	13	80	462	49	533.4	7	654	44.4	20
20"	500	815	88.9	88.9	610	508	513.1	514.4	488.9	134	165	197	13	83	512.8	54	584.2	7	723.9	44.4	24
24"	600	940	101.6	101.6	718	610	616	616	590.5	147	184	210	13	93	614.4	64	692.2	7	838.2	50.8	24

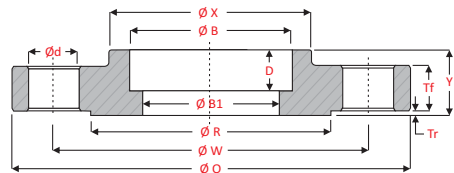


Leading Manufacturer, Exporter & Supplier of **Forged Flange and Fittings**

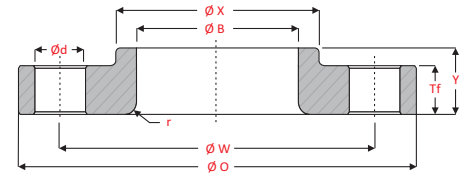
ASME B 16.5 - 2009



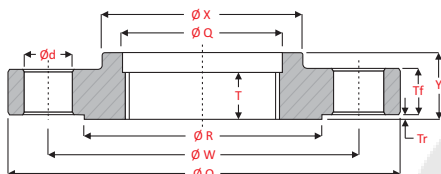
SLIP ON FLANGE



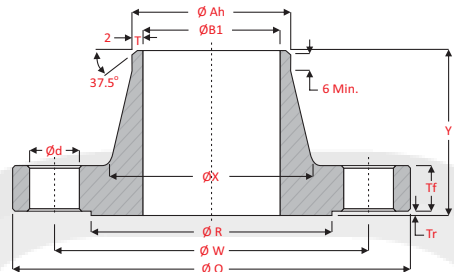
SOCKET WELD FLANGE



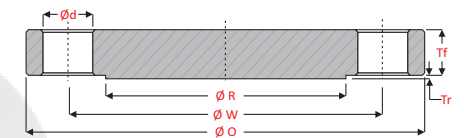
LAP JOINT FLANGE



THREADED FLANGE



WELDNECK FLANGE



BLIND FLANGE

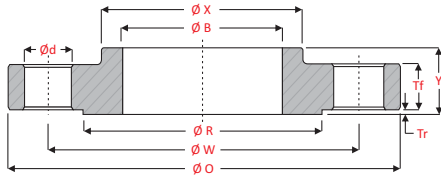
ASME B 16.5 - 2009 - Class 900 Flanges

Nominal Pipe Size	Flange Diameter	Flange Thickness		Hub Dia		Bore			Length Through Hub			Radius - LJ	Thread Length THRD	Counter Bore THRD	Depth of Socket SW	Raised Face		Drilling			
		SO, SW, WN, BL, THRD	LJ	SO, SW, LJ, WN, THRD	Bewel end Dia-WN	SO	LJ	WN LJ	SO, SW, THRD	LJ	WN					Dia	Thickness	PCD	Hole Dia	No. of Hole	
NPS	O	Tf	Tf	X	Ah	B	B	B1	Y	Y	Y	r	T	Q	D	R	Tr	W	d	n	
1/2"	15	120	22.3	22.3	38	21.3	22.2	22.9	15.8	39	32	67	3	23	23.6	10	34.9	7	82.6	22.2	4
3/4"	20	130	25.4	25.4	44	26.7	27.7	28.2	20.9	42	35	77	3	26	29	11	42.9	7	88.9	22.2	4
1"	25	150	28.6	28.6	52	33.4	34.5	34.9	26.6	48	41	80	3	29	35.8	13	50.8	7	101.6	25.4	4
1 1/4"	30	160	28.6	28.6	64	42.2	43.2	43.7	35.1	48	41	80	5	31	44.4	14	63.5	7	111.1	25.4	4
1 1/2"	40	180	31.8	31.8	70	48.3	49.5	50	40.9	51	44	90	6	32	50.6	16	73	7	123.8	28.6	4
2"	50	215	38.1	38.1	105	60.3	61.9	62.5	52.5	64	57	109	8	39	63.5	17	92.1	7	165.1	25.4	8
2 1/2"	60	245	41.3	41.3	124	73	74.6	75.4	62.7	71	64	112	8	48	76.2	19	104.8	7	190.5	28.6	8
3"	80	240	38.1	38.1	127	88.9	90.7	91.4	77.9	61	54	109	10	42	92.2	21	127	7	190.5	25.4	8
4"	100	290	44.5	44.5	159	114.3	116.1	116.8	102.3	77	70	121	11	48	117.6	24	157.2	7	235	31.7	8
5"	125	350	50.8	50.8	190	141.3	143.8	144.4	128.2	86	79	134	11	54	144.4	24	185.7	7	279.4	34.9	8
6"	150	380	55.6	55.6	235	168.3	170.7	171.4	154.1	93	86	147	13	58	171.4	27	215.9	7	317.5	31.7	12
8"	200	470	63.5	63.5	298	219.1	221.5	222.2	202.7	109	114	169	13	64	222.2	32	269.9	7	393.7	38.1	12
10"	250	545	69.9	69.9	368	273	276.2	277.4	254.6	115	127	191	13	72	276.2	33	323.8	7	469.9	38.1	16
12"	300	610	79.4	79.4	419	323.8	327	328.2	304.8	124	143	207	13	77	328.6	40	381	7	533.4	38.1	20
14"	350	640	85.8	85.8	451	355.6	359.2	360.2	336.5	137	156	220	13	83	360.4	41	412.8	7	558.8	41.3	20
16"	400	705	88.9	88.9	508	406.4	410.5	411.2	387.3	140	165	223	13	86	411.2	44	469.9	7	616	44.4	20
18"	450	785	101.6	101.6	565	457	461.8	462.3	438.1	159	190	236	13	89	462	49	533.4	7	685.8	50.8	20
20"	500	855	108	108	622	508	513.1	514.4	488.9	166	210	255	13	93	512.8	54	584.2	7	749.3	54	20
24"	600	1,040	139.7	139.7	749	610	616	616	590.5	210	267	299	13	102	614.4	64	692.2	7	901.7	66.7	20

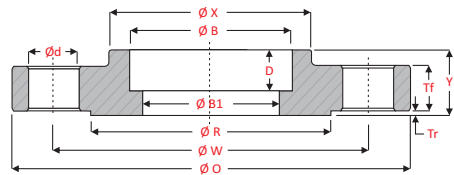


Leading Manufacturer, Exporter & Supplier of **Forged Flange and Fittings**

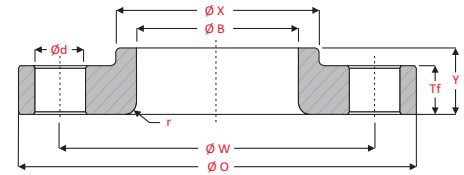
ASME B 16.5 - 2009



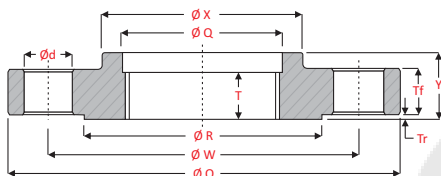
SLIP ON FLANGE



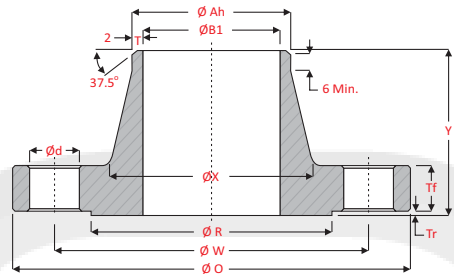
SOCKET WELD FLANGE



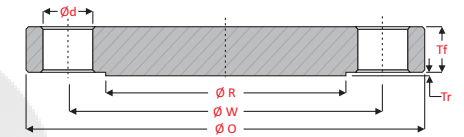
LAP JOINT FLANGE



THREADED FLANGE



WELDNECK FLANGE



BLIND FLANGE

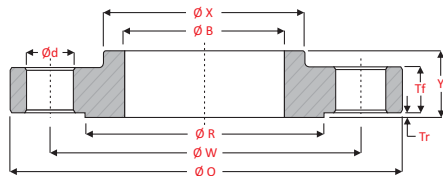
ASME B 16.5 - 2009 - Class 1500 Flanges

Nominal Pipe Size	Flange Diameter	Flange Thickness		Hub Dia		Bore			Length Through Hub			Radius - LJ	Thread Length THRD	Counter Bore THRD	Depth of Socket SW	Raised Face		Drilling			
		SO, SW, WN, BL, THRD	LJ	SO, SW, LJ, WN, THRD	Bewel end Dia-WN	SO	LJ	WN LJ	SO, SW, THRD	LJ	WN					Dia	Thickness	PCD	Hole Dia	No. of Hole	
NPS	O	Tf	Tf	X	Ah	B	B	B1	Y	Y	Y	r	T	Q	D	R	Tr	W	d	n	
1/2"	15	120	22.3	22.3	38	21.3	22.2	22.9	15.8	39	32	67	3	23	23.6	10	34.9	7	82.6	22.2	4
3/4"	20	130	25.4	25.4	44	26.7	27.7	28.2	20.9	42	35	77	3	26	29	11	42.9	7	88.9	22.2	4
1"	25	150	28.6	28.6	52	33.4	34.5	34.9	26.6	48	41	80	3	29	35.8	13	50.8	7	101.6	25.4	4
1 1/4"	30	160	28.6	28.6	64	42.2	43.2	43.7	35.1	48	41	80	5	31	44.4	14	63.5	7	111.1	25.4	4
1 1/2"	40	180	31.8	31.8	70	48.3	49.5	50	40.9	51	44	90	6	32	50.6	16	73	7	123.8	28.6	4
2"	50	215	38.1	38.1	105	60.3	61.9	62.5	52.5	64	57	109	8	39	63.5	17	92.1	7	165.1	25.4	8
2 1/2"	60	245	41.3	41.3	124	73	74.6	75.4	62.7	71	64	112	8	48	76.2	19	104.8	7	190.5	28.6	8
3"	80	265	47.7	47.7	133	88.9	90.7	91.4	77.9	80	73	124	10	---	---	21	127	7	203.2	31.7	8
4"	100	310	54	54	162	114.3	116.1	116.8	102.3	97	90	131	11	---	---	24	157.2	7	241.3	34.9	8
5"	125	375	73.1	73.1	197	141.3	143.8	144.4	128.2	112	105	163	11	---	---	24	185.7	7	292.1	41.3	8
6"	150	395	82.6	82.6	229	168.3	170.7	171.4	154.1	126	119	178	13	---	---	27	215.9	7	317.5	38.1	12
8"	200	485	92.1	92.1	292	219.1	221.5	222.2	202.7	150	143	220	13	---	---	32	269.9	7	393.7	44.4	12
10"	250	585	108	108	368	273	276.2	277.4	254.6	185	178	261	13	---	---	33	323.8	7	482.6	50.8	12
12"	300	675	123.9	123.9	451	323.8	327	328.2	304.8	226	219	290	13	---	---	40	381	7	571.5	54	16
14"	350	750	133.4	133.4	495	355.6	359.2	360.2	336.5	248	241	305	13	---	---	41	412.8	7	635	60.3	16
16"	400	825	146.1	146.1	552	406.4	410.5	411.2	387.3	267	260	318	13	---	---	44	469.9	7	704.8	66.7	16
18"	450	915	162	162	597	457	461.8	462.3	438.1	283	276	334	13	---	---	49	533.4	7	774.7	73	16
20"	500	985	177.8	177.8	641	508	513.1	514.4	488.9	299	292	363	13	---	---	54	584.2	7	831.8	79.4	16
24"	600	1170	203.2	203.2	762	610	616	616	590.5	337	330	413	13	---	---	64	692.2	7	990.6	92.1	16

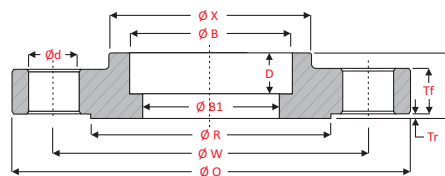


Leading Manufacturer, Exporter & Supplier of **Forged Flange and Fittings**

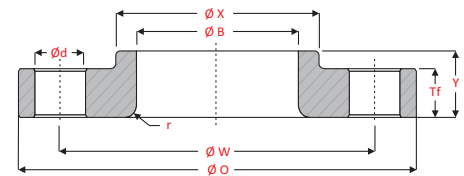
ASME B 16.5 - 2009



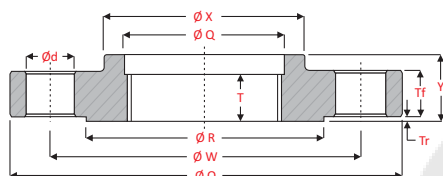
SLIP ON FLANGE



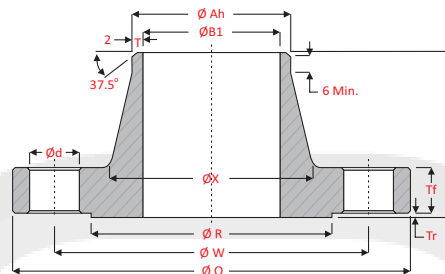
SOCKET WELD FLANGE



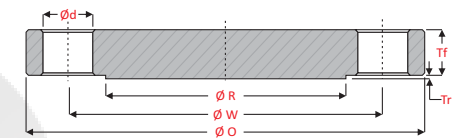
LAP JOINT FLANGE



THREADED FLANGE



WELDNECK FLANGE



BLIND FLANGE

ASME B 16.5 - 2009 - Class 2500 Flanges

Nominal Pipe Size	Flange Diameter	Flange Thickness		Hub Dia		Bore			Length Through Hub			Radius - LJ	Thread Length THRD	Counter Bore THRD	Depth of Socket SW	Raised Face		Drilling			
		SO, SW, WN, BL, THRD	LJ	SO, SW, LJ, WN, THRD	Bewel end Dia-WN	SO	LJ	WN LJ	SO, SW, THRD	LJ	WN					Dia	Thickness	PCD	Hole Dia	No. of Hole	
NPS	O	Tf	Tf	X	Ah	B	B	B1	Y	Y	Y	r	T	Q	D	R	Tr	W	d	n	
1/2"	15	135	30.2	30.2	43	21.3	22.2	22.9	15.8	47	40	80	3	29	23.6	10	34.9	7	88.9	22.2	4
3/4"	20	140	31.8	31.8	51	26.7	27.7	28.2	20.9	50	43	86	3	32	29	11	42.9	7	95.2	22.2	4
1"	25	160	35	35	57	33.4	34.5	34.9	26.6	55	48	96	3	35	35.8	13	50.8	7	108	25.4	4
1 1/4"	30	185	38.1	38.1	73	42.2	43.2	43.7	35.1	59	52	102	5	39	44.4	14	63.5	7	130.2	28.6	4
1 1/2"	40	205	44.5	44.5	79	48.3	49.5	50	40.9	67	60	118	6	45	50.6	16	73	7	146	31.7	4
2"	50	235	50.9	50.9	95	60.3	61.9	62.5	52.5	77	70	134	8	51	63.5	17	92.1	7	171.4	28.6	8
2 1/2"	60	265	57.2	57.2	114	73	74.6	75.4	62.7	86	79	150	8	58	76.2	19	104.8	7	196.8	31.7	8
3"	80	305	66.7	66.7	133	88.9	90.7	91.4	77.9	99	92	175	10	---	---	21	127	7	228.6	34.9	8
4"	100	355	76.2	76.2	165	114.3	116.1	116.8	102.3	115	108	197	11	---	---	24	157.2	7	273	41.3	8
5"	125	420	92.1	92.1	203	141.3	143.8	144.4	128.2	137	130	236	11	---	---	24	185.7	7	323.8	47.6	8
6"	150	485	108	108	235	168.3	170.7	171.4	154.1	159	152	280	13	---	---	27	215.9	7	368.3	54	8
8"	200	550	127	127	305	219.1	221.5	222.2	202.7	185	178	325	13	---	---	32	269.9	7	438.2	54	12
10"	250	675	165.1	165.1	375	273	276.2	277.4	254.6	236	229	426	13	---	---	33	323.8	7	539.8	66.7	12
12"	300	760	184.2	184.2	441	323.8	327	328.2	304.8	261	254	471	13	---	---	40	381	7	619.1	73	12



Leading Manufacturer, Exporter & Supplier of **Forged Flange and Fittings**

ASME B 16.5 - 2009

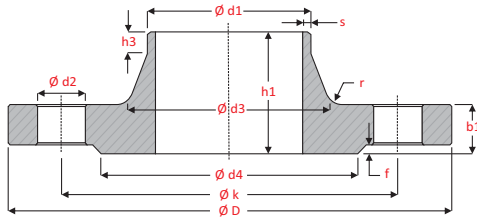
Nominal Bore For Weld Neck Flanges

NPS		OD	STD Wall	Sch 40	Sch 60	EXT Hvy	Sch 80	Sch 100	Sch 120	Sch 140	Sch 160	XX Hvy
1/2"	15	21.3	15.8	15.8	---	13.9	13.9	---	---	---	11.8	6.4
3/4"	20	26.7	20.9	20.9	---	18.8	18.8	---	---	---	15.5	11.0
1"	25	33.4	26.6	26.6	---	24.3	24.3	---	---	---	20.7	15.2
1 1/4"	30	42.2	35.1	35.1	---	32.5	32.5	---	---	---	29.5	22.8
1 1/2"	40	48.3	40.9	40.9	---	38.1	38.1	---	---	---	34.0	27.9
2"	50	60.3	52.5	52.5	---	49.3	49.3	---	---	---	42.8	38.2
2 1/2"	60	73	62.7	62.7	---	59.0	59.0	---	---	---	54.0	45.0
3"	80	88.9	77.9	77.9	---	73.7	73.7	---	---	---	66.6	58.4
3 1/2"	90	101.6	90.1	90.1	---	85.4	85.4	---	---	---	---	69.3
4"	100	114.3	102.3	102.3	---	97.2	97.2	---	92.0	---	87.3	80.1
5"	125	141.3	128.2	128.2	---	122.3	122.3	---	115.9	---	109.6	103.2
6"	150	168.3	154.1	154.1	---	146.3	146.3	---	139.7	---	131.7	124.4
8"	200	219.1	202.7	202.7	198.5	193.7	193.7	188.5	182.5	177.8	173.1	174.6
10"	250	273.1	254.5	254.5	247.7	247.7	242.9	236.5	230.2	222.3	215.9	222.3
12"	300	323.9	304.8	303.2	295.3	298.5	288.9	281.0	273.1	266.7	257.2	273.1
14"	350	355.6	336.6	333.3	325.4	330.2	317.5	307.9	300.0	292.1	284.2	---
16"	400	406.4	387.4	381.0	373.1	381.0	363.5	354.0	344.5	333.3	325.4	---
18"	450	457.2	438.2	428.7	419.1	431.8	409.5	398.5	387.4	377.9	366.7	---
20"	500	508.0	489.0	477.8	466.8	482.6	455.6	422.9	431.8	419.1	408.0	---
24"	600	609.6	590.6	574.6	560.4	584.2	547.7	531.8	517.6	504.9	490.5	---

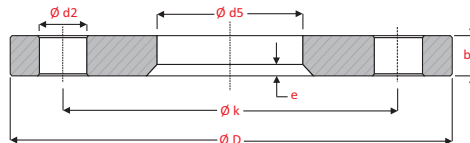


Leading Manufacturer, Exporter & Supplier of **Forged Flange and Fittings**

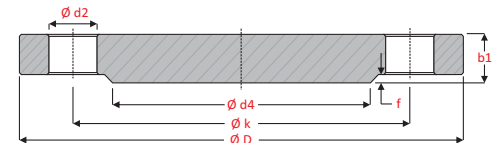
DIN - FLANGES



WELD NECK FLANGE - DIN 2631 / 2634 / 2635



FLAT FLANGE - DIN 2573 / 2503



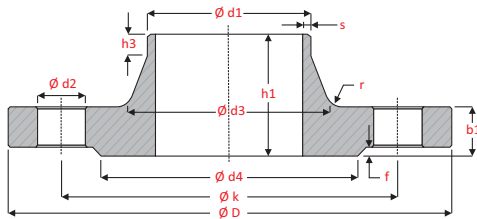
BLIND FLANGE - DIN 2527

Nominal Size	Flange		Hub											Raised Face		Drilling				Approx Weight																				
	Diameter	Thickness	Weld end Diameter		Hub Diameter		Bore for Slipon			Wall Thickness	WN Radius	Length Through Hub	Length	Dia	Thickness	PCD	Hole Dia	Thread	No. of Hole	Weldneck	Blind	Flat Flange																		
		WN, SO, BL	Flat	Srs-1	Srs-2	Srs-1	Srs-2	Srs-1	Srs-2														Ch X 45																	
NOMINAL PRESSURE 6 BAR																							WELDING NECK FLANGES : DIN 2631											FLAT FLANGE : DIN 2573				BLIND FLANGES : DIN 2527		
NPS	D	b1	b2	d1	d1	d3	d3	d5	d5	e	s	r1	h1	h3	d4	f	k	d2	Thrd	Hole	Wt	Wt	Wt																	
10	75	12	12	17.2	14	26	22	17.7	14.5	5	1.8	4	28	6	35	2	50	11	M 10	4	0.3	0.4	0.4																	
15	80	12	12	21.3	20	30	28	22	21	5	2	4	30	6	40	2	55	11	M 10	4	0.4	0.4	0.4																	
20	90	14	14	26.3	25	38	35	27.6	26	5	2.3	4	32	6	50	2	65	11	M 10	4	0.6	0.7	0.6																	
25	100	14	14	33.7	30	42	40	34.4	31	5	2.6	4	35	6	60	2	75	11	M 10	4	0.7	0.8	0.7																	
32	120	14	16	42.4	38	55	50	43.1	39	5	2.6	6	35	6	70	2	90	14	M 12	4	1.1	1.2	1.2																	
40	130	14	16	48.3	44.5	62	58	49	45.5	5	2.6	6	38	7	80	3	100	14	M 12	4	1.2	1.4	1.4																	
50	140	14	16	60.3	57	74	70	61.1	58.1	6	2.9	6	38	8	90	3	110	14	M 12	4	1.3	1.6	1.5																	
65	160	14	16	76.1	---	88	77.1	---	6	2.9	6	38	9	110	3	130	14	M 12	4	1.7	2.5	1.9																		
80	190	16	18	88.9	---	102	90.3	---	7	3.2	8	42	10	128	3	150	18	M 16	4	2.7	3.5	3.0																		
100	210	16	18	114.3	108	130	122	115.9	109.6	7	3.6	8	45	10	148	3	170	18	M 16	4	3.2	4.9	3.5																	
125	240	18	20	139.7	133	155	148	141.6	134.8	7	4	8	48	10	178	3	200	18	M 16	8	4.5	6.3	4.6																	
150	265	18	20	168.3	159	184	172	170.5	161.1	7	4.5	10	48	12	202	3	225	18	M 16	8	5.2	7.8	5.2																	
200	320	20	22	219.1	---	236	221.8	---	7	5.9	10	55	15	258	3	280	18	M 16	8	7.8	12.7	7.2																		
250	375	22	24	273	267	290	282	276.2	270.2	7	6.3	12	60	15	312	3	335	18	M 16	12	10.8	19.0	9.6																	
300	440	22	24	323.9	---	342	327.6	---	7	7.1	12	62	15	365	4	395	22	M 20	12	14.0	26.3	12.6																		
350	490	22	26	355.6	368	---	385	372.2	359.7	7	7.1	12	62	15	415	4	445	22	M 20	12	18.5	32.9	15.6																	
400	540	22	28	406.4	419	---	438	423.7	411	7	7.1	12	65	15	465	4	495	22	M 20	16	21.2	40.2	18.4																	
500	645	24	30	508	---	538	513.6	---	7	7.1	12	68	15	570	4	600	22	M 20	20	28.6	63.2	24.6																		

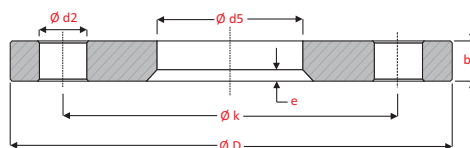


Leading Manufacturer, Exporter & Supplier of **Forged Flange and Fittings**

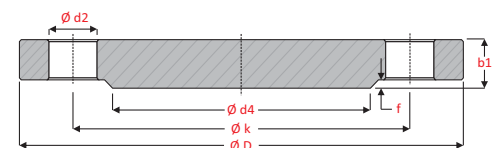
DIN - FLANGES



WELD NECK FLANGE - DIN 2631 / 2634 / 2635



FLAT FLANGE - DIN 2573 / 2503



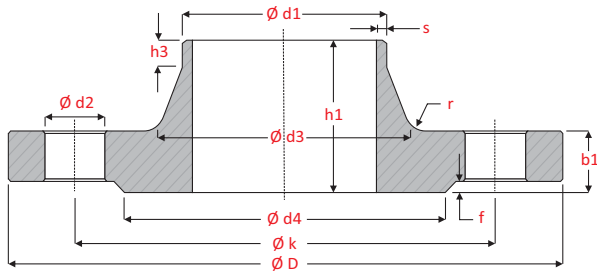
BLIND FLANGE - DIN 2527

Nominal Size	Flange		Hub											Raised Face		Drilling				Approx Weight																									
	Diameter	Thickness	Weld end Diameter		Hub Diameter		Bore for Slipon			Wall Thickness	WN Radius	Length Through Hub	Length	Dia	Thickness	PCD	Hole Dia	Thread	No. of Hole	Weldneck	Blind	Flat Flange																							
		WN, SO, BL	Flat	Srs-1	Srs-2	Srs-1	Srs-2	Srs-1	Srs-2														Ch X 45																						
NOMINAL PRESSURE 25 BAR																							WELDING NECK FLANGES : DIN 2634				FLAT FLANGE : DIN 2503				BLIND FLANGES : DIN 2527														
NPS	D	b1	b2	d1	d1	d3	d3	d5	d5	e	s	r1	h1	h3	d4	f	k	d2	Thrd	Hole	Wt	Wt	Wt																						
10 TO 150																							Refer 40 BAR																						
200	360	30	30	219.1	---	---	244	---	221.8	---	6.3	10	80	16	278	3	310	26	M 24	12	17.0	22.7	13.4																						
250	425	32	32	273	267	298	292	---	276.2	---	7.1	12	88	18	335	3	370	30	M 27	12	24.4	34.2	18.5																						
300	485	34	34	323.9	---	---	352	---	327.6	---	8	12	92	18	395	4	430	30	M 27	16	31.2	47.3	23.8																						
350	555	38	38	355.6	368	---	398	---	359.7	---	8	12	100	20	450	4	490	33	M 30	16	47.2	69.3	37.8																						
400	620	40	40	406.4	419	---	452	---	411	---	8.8	12	110	20	505	4	550	36	M 33	16	61.7	91.5	45.4																						
500	730	44	44	508	---	---	558	---	513.6	---	10	12	125	20	615	4	660	36	M 33	20	89.6	141.0	66.0																						
NOMINAL PRESSURE 40 BAR																							WELDING NECK FLANGES : DIN 2635				FLAT FLANGE : DIN 2503				BLIND FLANGES : DIN 2527														
NPS	D	b1	b2	d1	d1	d3	d3	d5	d5	e	s	r1	h1	h3	d4	f	k	d2	Thrd	Hole	Wt	Wt	Wt																						
10	90	16	16	17.2	14	28	25	---	17.7	---	1.8	4	35	6	40	2	60	14	M 12	4	0.7	0.7	0.7																						
15	95	16	16	21.3	20	32	30	---	22	---	2	4	38	6	45	2	65	14	M 12	4	0.7	0.8	0.8																						
20	105	18	18	26.9	25	40	38	---	27.6	---	2.3	4	40	6	58	2	75	14	M 12	4	1.1	1.2	1.1																						
25	115	18	18	33.7	30	46	42	---	34.4	---	2.6	4	40	6	68	2	85	14	M 12	4	1.3	1.4	1.3																						
32	140	18	18	42.4	38	56	52	---	43.1	---	2.6	6	42	6	78	2	100	18	M 16	4	1.9	2.0	1.8																						
40	150	18	18	48.3	44.5	64	60	---	49	---	2.6	6	45	7	88	3	110	18	M 16	4	2.3	2.4	2.1																						
50	165	20	20	60.3	57	75	72	---	61.1	---	2.9	6	48	8	102	3	125	18	M 16	4	2.8	3.2	2.7																						
65	185	22	22	76.1	---	---	90	---	77.1	---	2.9	6	52	10	122	3	145	18	M 16	8	3.7	4.3	3.5																						
80	200	24	24	88.9	---	---	105	---	90.3	---	3.2	8	58	12	138	3	160	18	M 16	8	4.8	5.9	4.3																						
100	235	24	24	114.3	108	134	128	---	115.9	---	3.6	8	65	12	162	3	190	22	M 20	8	6.5	7.6	5.6																						
125	270	26	26	139.7	133	162	155	---	141.6	---	4	8	68	12	188	3	220	26	M 24	8	9.1	11.0	7.6																						
150	300	28	28	168.3	159	192	182	---	170.5	---	4.5	10	75	12	218	3	250	26	M 24	8	11.8	14.7	9.6																						
200	375	34	34	219.1	---	---	244	---	221.8	---	6.3	10	88	16	285	3	320	30	M 27	12	21.5	27.6	16.9																						
250	450	38	38	273	267	306	298	---	276.2	---	7.1	12	105	18	345	3	385	33	M 30	12	34.9	44.9	26.5																						
300	515	42	42	323.9	---	---	362	---	327.6	---	8	12	115	18	410	4	450	33	M 30	16	49.7	64.3	36.8																						
350	580	46	46	355.6	368	---	408	---	359.7	---	8.8	12	125	20	465	4	510	36	M 33	16	68.1	90.8	52.2																						
400	660	50	50	406.4	419	---	462	---	411	---	11	12	135	20	535	4	585	39	M 36	16	96.5	129.0	74.7																						
500	755	52	52	508	---	---	562	---	513.6	---	14.2	12	140	20	615	4	670	42	M 39	20	117.0	175.0	86.9																						

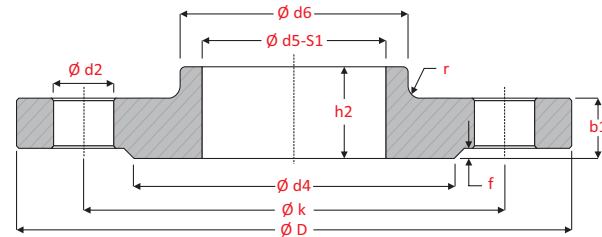


Leading Manufacturer, Exporter & Supplier of **Forged Flange and Fittings**

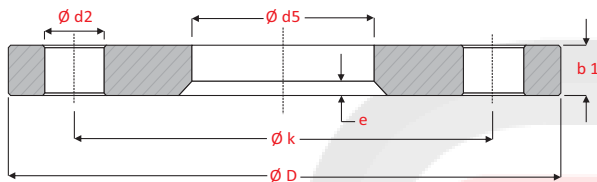
DIN - FLANGES



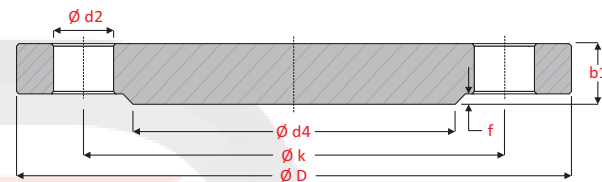
WELD NECK FLANGE - DIN 2632 / 2633



SLIP ON FLANGE - DIN 8029 / 8030



FLAT FLANGE - DIN 2576 / 2502



BLIND FLANGE - DIN 2527

Nominal Size	Flange		Hub										Raised Face		Drilling				Approx Weight								
	Diameter	Thickness	Weld end Diameter		Hub Diameter			Bore for Slipon			Wall Thickness	Radius		Length Through Hub	Length	Dia	Thickness	PCD	Hole Dia	Thread	No. of Hole	Weldneck	Blind	SO	Flat Flange		
		WN, SO, BL	Flat	Srs-1	Srs-2	Srs-1	Srs-2	SO	Srs-1	Srs-2		Ch X 45°	WN													SO	
NOMINAL PRESSURE 16 BAR WELDING NECK FLANGES : DIN 2632 FLAT FLANGE : DIN 2576 SLIP-ON FLANGE : DIN 8029 BLIND FLANGES : DIN 2527																											
NPS	D	b1	b2	d1	d1	d3	d3	d6	d5	d5	e	s	r1	r2	h1	h2	h3	d4	f	k	d2	Thrd	Hole	Wt	Wt	Wt	Wt
10	90	14	14	17.2	14	28	25	30	---	17.7	---	1.8	4	4	35	20	6	40	2	60	14	M 12	4	0.6	0.6	0.6	0.6
15	95	14	14	21.3	20	32	30	35	---	22	---	2	4	4	35	20	6	45	2	65	14	M 12	4	0.6	0.7	0.6	0.7
20	105	16	16	26.9	25	40	38	45	---	27.6	---	2.3	4	4	38	24	6	58	2	75	14	M 12	4	1.0	1.0	0.9	0.9
25	115	16	16	33.7	30	45	42	52	---	34.4	---	2.6	4	5	38	24	6	68	2	85	14	M 12	4	1.1	1.2	1.1	1.1
32	140	16	16	42.4	38	56	52	60	---	43.1	---	2.6	6	5	40	26	6	78	2	100	18	M 16	4	1.7	1.8	1.6	1.6
40	150	16	16	48.3	44.5	64	60	70	---	49	---	2.6	6	5	42	26	7	88	3	110	18	M 16	4	1.9	2.1	1.8	1.9
50	165	18	18	60.3	57	75	72	85	---	61.1	---	2.9	6	5	45	28	8	102	3	125	18	M 16	4	2.5	2.9	2.4	2.5
65	185	18	18	76.1	---	---	90	105	---	77.1	---	2.9	6	5	45	32	10	122	3	145	18	M 16	4	3.1	3.7	3.1	3.0
80	200	20	20	88.9	---	---	105	118	---	90.3	---	3.2	8	5	50	34	10	138	3	160	18	M 16	8	3.7	4.8	3.8	3.6
100	220	20	20	114.3	108	131	125	140	---	115.9	---	3.6	8	5	52	38	12	158	3	180	18	M 16	8	4.6	5.8	4.3	4.0
125	250	22	22	139.7	133	156	150	168	---	141.6	---	4	8	5	55	40	12	188	3	210	18	M 16	8	6.3	8.6	5.9	5.4
150	285	22	22	168.3	159	184	175	196	---	170.5	---	4.5	10	5	55	44	12	212	3	240	22	M 20	8	7.8	10.6	7.2	6.6
200	340	24	24	219.1	---	---	235	247	---	221.8	---	5.9	10	6	62	44	16	268	3	295	22	M 20	12	11.0	16.5	9.7	9.0
250	405	26	26	273	267	292	285	300	---	276.2	---	6.3	12	6	70	46	16	320	3	355	26	M 24	12	15.6	25.6	13.5	12.8
300	460	28	28	323.9	---	---	344	355	---	327.6	---	7.0	12	6	78	46	16	378	4	410	26	M 24	12	22.0	36.1	17.3	16.6
350	520	30	30	355.6	368	---	390	400	---	359.7	---	8	12	10	82	57	16	438	4	470	26	M 24	16	31.2	49.1	27.7	24.1
400	580	32	32	406.4	419	---	445	457	---	411	---	8	12	10	85	63	16	490	4	525	30	M 27	16	39.3	65.3	36.1	30.2
500	715	34	38	508	---	---	548	559	---	513.6	---	8	12	10	90	73	16	610	4	650	33	M 30	20	61.0	105.0	56.9	52.9



Leading Manufacturer, Exporter & Supplier of **Forged Flange and Fittings**

Approximate Weight of Flanges in Kgs.

ASME B 16.5 - Class 150						
NPS	SO/LJ	THRD	SW	BL	Wn	
1/2"	15	0.4	0.4	0.4	0.4	0.5
3/4"	20	0.7	0.7	0.7	0.7	0.7
1"	25	0.8	0.9	0.9	0.9	1.1
1 1/4"	30	1.1	1.2	1.2	1.3	1.5
1 1/2"	40	1.4	1.5	1.5	1.6	1.8
2"	50	2.2	2.3	2.3	2.6	2.7
2 1/2"	60	3.6	3.7	3.7	4.1	4.4
3"	80	4.1	4.2	4.2	5.0	5.2
3 1/2"	90	5.2	5.3	5.4	6.4	6.4
4"	100	5.6	5.9	5.8	7.1	7.5
5"	125	6.3	7.0	6.5	9.0	9.2
6"	150	7.5	8.4	7.8	11.8	11
8"	200	12.6	13.0	---	21.0	18.3
10"	250	18.5	17.8	---	30.0	25
12"	300	28.0	29.5	---	45.0	39
14"	350	35.0	---	---	59.0	51
16"	400	45.0	47.0	---	79.0	60
18"	450	50.0	54.0	---	97.0	71
20"	500	64.0	68.0	---	124.0	86
24"	600	89.0	93.0	---	188.0	119

ASME B 16.5 - Class 300						
NPS	SO/LJ	THRD	SW	BL	Wn	
1/2"	15	0.7	0.7	0.7	0.7	0.8
3/4"	20	1.1	1.2	1.2	1.2	1.3
1"	25	1.4	1.4	1.4	1.5	1.7
1 1/4"	30	1.8	1.9	1.9	2.0	2.2
1 1/2"	40	2.6	2.8	2.8	2.9	3.2
2"	50	3.4	3.3	3.3	3.4	3.6
2 1/2"	60	4.4	4.6	4.6	5.1	5.4
3"	80	6.1	6.3	6.3	7.0	7.4
3 1/2"	90	7.5	7.8	---	8.9	8.9
4"	100	10.1	10.2	---	11.8	11.9
5"	125	12.5	12.9	---	15.5	16
6"	150	14.1	15.0	---	21.3	20.2
8"	200	24.8	26.0	---	35.2	31
10"	250	37.1	37.5	---	57.0	44.3
12"	300	50.0	52.0	---	82.0	64
14"	350	70.0	72.0	---	106.0	88
16"	400	97.0	100.0	---	140.0	113
18"	450	123.0	126.0	---	178.0	134
20"	500	133.0	138.0	---	223.0	171
24"	600	203.0	213.0	---	345.0	238

ASME B 16.5 - Class 600						
NPS	SO/LJ	THRD	SW	BL	Wn	
1/2"	15	0.8	1.0	1	0.7	0.9
3/4"	20	1.4	1.6	1.6	1.2	1.5
1"	25	1.6	1.8	1.8	1.5	1.9
1 1/4"	30	2.1	2.6	2.6	2.0	2.6
1 1/2"	40	3.1	3.3	3.3	3.2	3.3
2"	50	3.7	3.9	3.9	4.3	4.7
2 1/2"	60	5.4	6.0	6	6.0	6.5
3"	80	7.3	7.4	---	8.0	8.7
4"	100	15.8	17.0	---	18.0	18.1
5"	125	24.5	26.5	---	28.5	30.5
6"	150	29.5	32.0	---	35.5	36.2
8"	200	43.0	46.0	---	58.0	49.5
10"	250	70.0	74.0	---	98.0	89
12"	300	86.0	90.0	---	125.0	110
14"	350	100	108.0	---	151.0	150
16"	400	142	150.0	---	215.0	190
18"	450	175	188.0	---	275.0	240
20"	500	221	230.0	---	350.0	295
24"	600	315	325.0	---	532.0	363

ASME B 16.5 - Class 900						
NPS	SO/LJ	THRD	SW	BL	Wn	
1/2"	15	1.7	1.7	---	1.8	1.9
3/4"	20	2.3	2.4	---	2.4	2.6
1"	25	3.4	3.5	---	3.6	3.8
1 1/4"	30	3.9	4.0	---	4.1	4.4
1 1/2"	40	5.4	5.5	---	5.8	6.0
2"	50	9.8	10.0	---	10.1	11.1
2 1/2"	60	13.7	13.9	---	14.0	15.5
3"	80	11.6	11.9	---	13.1	14
4"	100	19.8	20.0	---	22.1	23.2
5"	125	32.0	32.5	---	36.5	37.1
6"	150	41.2	41.7	---	47.4	49.3
8"	200	71.0	71.0	---	82.5	84
10"	250	100	101	---	123	123
12"	300	133	134	---	174	163
14"	350	152	154	---	206	186
16"	400	184	186	---	259	224
18"	450	258	260	---	367	300
20"	500	317	320	---	463	373
24"	600	608	611	---	875	---



Leading Manufacturer, Exporter & Supplier of **Forged Flange and Fittings**

Dimensional Tolerance (mm)

The tolerance tabulated below apply to all ANSI Flanges : Large diameter Flanges and the Flanges end of Welding Necks. Certain other Tolerances apply to Orifice Flanges and those are as covered by American Gas Association recommendations.

Except where indicated the tolerances are those established by ANSI B 16.5 and the verifications are maximum. In actual practise manufacturing and inspection procedures control dimensions so closely that variations are normally much less those listed as permitted.

Threaded, Slip-On, Lab Joint And Blind Flanges			Welding Neck Flanges		
Outside Diameter*	When O.D.is 24" or Less	± 1.6	Outside Diameter*	When O.D.is 24" or Less	± 1.6
	When O.D.is Over 24"	± 3.2		When O.D.is Over 24"	± 3.2
Inside Diameter	Threaded	Within Limit On Boring Gauge	Inside Diameter	10" and Smaller	± 0.8
	Slip-On and Lap Joint	+0.8,-0.0		12" Through 18"	± 1.6
	10" and Smaller			20" and Larger	+3.2, -1.6
	12" and Larger	+1.6, -0.0			
Diameter of Counterbore	Same as for Onside Diameter		Diameter of Contact Face	1/16* Raised Face 1/4* Raised Face Tongue and Groove or Male and Female	± 0.8 ± 0.4
Diameter of Contact Face	1/16* Raised Face 1/4* Raised Face Tongue and Groove or Male and Female	± 0.8 ± 0.4	Diameter of Hub at Point of Welding	5" and Smaller	+2.4, -0.8
				6" and Larger	+3.9, -0.8
Outside Diameter of Hub	12" and Smaller	+2.4, 1.6	Diameter of Hub at Base*	When Hub Bases is 24" or Less	± 1.6
	14" and Larger	± 3.2		When Hub Base is Over 24"	± 3.2
Drilling	Bolt Circle	± 1.6	Drilling	Bolt Circle	± 1.6
	Both Hole Spacing	± 0.8		Both Hole Spacing	± 0.8
Eccentricity Bolt Circle & Facing (With Respect to Bore*)	2 1/2* and Smaller	0.8 max	Eccentricity Bolt Circle & Facing (With Respect to Bore*)	2 1/2* and Smaller	1.8 max
	3" and Larger	1.6 max		3" and Larger	1.6 max
Length Thru Hub*	18* and Smaller	+3.2, -0.8	Length Thru Hub*	10* and Smaller	± 1.8
	20" and Larger	+4.8, -1.6		12" and Larger	+3.2
Thickness	18* and Smaller	+3.2, -0.0	Thickness	18* and Smaller	+3.2, -0.0
	20" and Larger	+4.8, -0.0		20" and Larger	+4.8, -0.0
	Where Allowance Has Been Left On Face for Finish All Sizes*	+3.2, -1.6		Where Allowance Has Been Left On Face for Finish All Sizes*	+3.2, -1.6



Material Specification (ASTM)

CARBON STEEL																			
ASTM NO.	GRADE	C MAX	Mn	Si	S MAX	P MAX	Cr MAX	Ni MAX	Mo MAX	V MAX	Cu MAX	YS Mpa Min	UTS Mpa	% EL Min	%RA Min	Hardness BHN	Impact Joules	Temp. OC	From
A-105	-	0.35	0.60-1.05	0.1-0.35	0.40	0.35	0.3	0.4	0.12	0.08	0.4	250	485	22	30	137-187	-	-	Forging
A-106	A	0.25	0.27-0.93	0.1 Min	0.035	0.035	0.4	0.4	0.15	0.08	0.4	205	330	-	-	-	-	-	Tabular
	B	0.30	0.29-1.06	0.1 Min	0.035	0.035	0.4	0.4	0.15	0.08	0.4	240	415	-	-	-	-	-	Tabular
	C	0.35	0.29-1.06	0.1 Min	0.035	0.035	0.4	0.4	0.15	0.08	0.4	275	485	-	-	-	-	-	Tabular
A-182	F1	0.28	0.6-0.9	0.15-0.35	0.045	0.045	-	-	0.44-0.65	-	-	275	485	20	30	143-192	-	-	Forging
	F5a	0.25	0.60	0.5 Min	0.03	0.04	4-6	0.5	0.44-0.65	-	-	450	620	22	50	187-248	-	-	Forging
	F9	0.15	0.3-0.6	0.5-1.0	0.03	0.03	8-10	-	0.9-1.1	-	-	380	585	20	40	179-217	-	-	Forging
	F11CL1	0.15	0.3-0.6	0.5-1.0	0.03	0.03	1-1.5	-	0.44-0.65	-	-	205	415	20	45	121-174	-	-	Forging
	F11CL2	0.20	0.3-0.80	0.5-1.0	0.04	0.04	1-1.5	-	0.44-0.65	-	-	275	485	20	30	143-207	-	-	Forging
	FL11CL3	0.20	0.3-0.80	0.5-1.0	0.04	0.04	1-1.5	-	0.44-0.65	-	-	310	515	20	30	156-207	-	-	Forging
	F12CL1	0.15	0.3-0.6	0.5 Min	0.045	0.045	0.8-1.25	-	0.44-0.65	-	-	220	415	20	45	121-174	-	-	Forging
	F12CL2	0.20	0.3-0.9	0.1-0.6	0.04	0.04	0.8-1.25	-	0.44-0.65	-	-	275	485	20	30	143-207	-	-	Forging
	F22CL1	0.15	0.3-0.6	0.5 Min	0.04	0.04	2-2.5	-	0.87-1.13	-	-	205	415	20	35	170 Max	-	-	Forging
F22CL3	0.15	0.3-0.6	0.5	0.04	0.04	2-2.5	-	0.87-1.13	-	-	310	515	20	30	156-207	-	-	Forging	
ALLOY STEEL																			
A-350	LF2CL1	0.30	0.6-1.35	0.15-0.3	0.04	0.035	0.3	0.40	0.12	0.08	0.4	250	485	22	30	137-197	20	-46	Forging
	LF2CL2	0.30	0.6-1.35	0.15-0.3	0.04	0.035	0.3	0.40	0.12	0.08	0.4	250	485	22	30	137-197	27	-18	Forging
	LF3CL1	0.20	0.90	0.2-0.35	0.04	0.035	0.3	3.3-3.7	0.12	0.03	0.4	260	485	22	35	137-197	20	-101	Forging
	LF3CL2	0.20	0.90	0.2-0.35	0.04	0.035	0.3	3.3-3.7	0.12	0.03	0.4	260	485	22	35	137-197	27	-101	Forging
	LF6CL1	0.22	1.15-1.5	0.15-0.3	0.025	0.025	0.30	0.40	0.12	0.04-.11	0.4	360	455	22	40	137-197	20	-51	Forging
	LF6CL2	0.22	1.15-1.5	0.15-0.3	0.025	0.025	0.30	0.40	0.12	0.04-.11	0.4	415	515	20	40	137-197	27	-51	Forging
STAINLESS STEEL																			
ASTM NO.	GRADE	C MAX	Mn	Si	S MAX	P MAX	Cr MAX	Ni MAX	Mo MAX	V MAX	Cu MAX	YS Mpa Min	UTS Mpa	% EL Min	%RA Min	Hardness BHN	Impact Joules	Temp. OC	From
A-182	F51	0.03	2.00	1.0	0.02	0.03	21-23	4.5-605	2.5-3.5	0.08-0.2	-	450	620	25	45	-	-	-	Forging
	F52	0.03	2.00	0.6	0.01	0.035	26-29	3.5-5.2	1.0-2.5	0.15-0.35	-	485	690	15	-	-	-	-	Forging
	F-304	0.08	2.00	1.0	0.03	0.045	18-20	8-11	-	0.1 Max	-	205	515	30	50	-	-	-	Forging
	F-304L	0.03	2.00	1.0	0.03	0.045	18-20	8-13	-	0.1 Max	-	170	485	30	50	-	-	-	Forging
	F-316	0.08	2.00	1.0	0.03	0.045	16-18	10-14	-	0.1 Max	-	205	515	30	50	-	-	-	Forging
	F-316L	0.03	2.00	1.0	0.03	0.045	16-18	10-15	-	0.1 Max	-	170	485	30	50	-	-	-	Forging
	F-321	0.08	2.00	1.0	0.03	0.045	17-19	9-12	-	-	-	205	515	30	50	-	-	-	Forging
	F-347	0.08	2.00	1.0	0.03	0.045	17-20	9-13	-	-	-	205	515	30	50	-	-	-	Forging

This brochure cover the technical specification for only Steel Flanges and Fittings Products by Prestige Forge
The Company is also engaged in forging variety of components weighing upto 10 M.T. which are being forged as per specific requirement of Customers.



Cell : +91 98251 22527
Ph. : +91 281 2388826
www.prestigeforge.com
prestigeforge@live.com

Off. Add.:- 30 - Samrat Ind. Area, Gokuldharm Main Road,
Nr. Aambedkar chowk, Rajkot - 360004 (Gujarat) INDIA.

